




# Moulded Fittings

## Stub Flange (SD-PEMSf)

SHIELD Fittings are available in moulded. They are manufactured as per ISO and ANSI/AWWA standard which are UL, FM, WRAS and API approved, applicable for fire fighting & Water Applications.



### Product Specifications:

Available Size	20mm - 500mm
Material	High Density Polyethylene, Medium Density Polyethylene
Standard	ISO 4427, EN 12201, API 15LE
Application	Firefighting (underground), Irrigation, Potable Water, Drainage, Gas Insulation/Sleeves/Jacket, Horizontal Directional Drilling Machine
Approvals/Listings	<div>     </div>

# Moulded Fittings

(Metric)

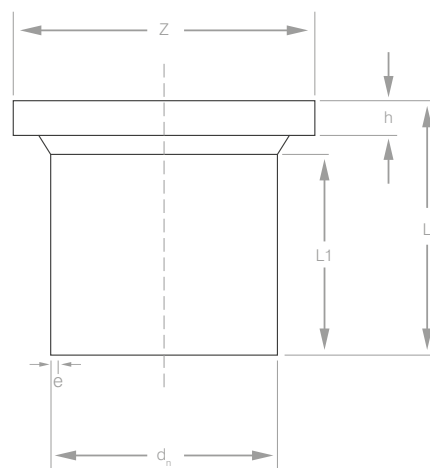
## Product Dimensions:

SD-PEMSF (ISO 4427) (PE 100 Long spigot version)

d <sub>n</sub>	D (Min - Max)	Z	L	L1	h				e			
					SDR 17	SDR 11	SDR 9	SDR 7.4	SDR 17	SDR 11	SDR 9	SDR 7.4
					PN10	PN16	PN20	PN25	PN10	PN16	PN20	PN25
mm	mm	mm	mm	mm	mm	mm	mm	mm	mm	mm	mm	mm
20	20.0 - 20.1	45	67	60	-	7	7	7	-	2.0 - 2.3	2.3 - 2.7	3.0 - 3.4
25	25.0 - 25.1	58	75	65	-	9	10	10	-	2.3 - 2.7	3.0 - 3.4	3.5 - 4.0
32	32.0 - 32.1	68	94	83	-	10	11	11	-	3.0 - 3.4	3.6 - 4.1	4.4 - 5.0
40	40.0 - 40.2	78	96	84	-	11	12	12	-	3.7 - 4.2	4.5 - 5.1	5.5 - 6.2
50	50.0 - 50.3	88	98	85	-	12	13	13	-	4.6 - 5.2	5.6 - 6.3	6.9 - 7.7
63	63.0 - 63.4	102	100	70	-	14	16	18	-	5.8 - 6.5	7.1 - 8.0	8.6 - 9.6
75	75.0 - 75.5	122	110	75	-	16	18	20	-	6.8 - 7.6	8.4 - 9.4	10.3 - 11.5
90	90.0 - 90.6	138	125	85	17	17	19	21	5.4 - 6.1	8.2 - 9.2	10.1 - 11.1	12.3 - 13.7
110	110.0 - 110.7	158	130	90	18	18	20	22	6.6 - 7.4	10.0 - 11.1	12.3 - 13.7	15.1 - 16.8
125	125.0 - 125.8	158	135	95	25	25	27	29	7.4 - 8.3	11.4 - 12.7	14.0 - 15.6	17.1 - 19.0
160	160.0 - 161.0	212	175	120	25	25	28	30	9.5 - 10.6	14.6 - 16.2	17.9 - 19.8	21.9 - 24.2
180	180.0 - 181.1	212	180	125	30	30	33	36	10.7 - 11.9	16.4 - 18.2	20.1 - 22.3	24.6 - 27.2
200	200.0 - 201.2	268	190	130	32	32	35	38	11.9 - 13.2	18.2 - 20.2	22.4 - 24.8	27.4 - 30.3
225	225.0 - 226.4	268	200	140	32	32	35	38	13.4 - 14.9	20.5 - 22.7	25.2 - 27.9	30.8 - 34.0
250	250.0 - 251.5	320	210	150	35	35	38	40	14.8 - 16.4	22.7 - 25.1	27.9 - 30.8	34.2 - 37.8
280	280.0 - 281.7	320	175	145	39	36	39	41	16.6 - 18.4	25.4 - 28.1	31.3 - 34.6	38.3 - 42.3
315	315.0 - 316.9	370	175	142	38	38	41	43	18.7 - 20.7	28.6 - 31.6	35.2 - 38.9	43.1 - 47.6
355	355.0 - 357.2	430	185	150	42	42	45	47	21.1 - 23.4	32.2 - 35.6	39.7 - 43.8	48.5 - 53.5
400	400.0 - 402.4	482	215	175	48	48	51	53	23.7 - 26.2	36.3 - 40.1	44.7 - 49.3	54.7 - 60.3
450	450.0 - 452.7	535	220	175	50	50	53	55	26.7 - 29.5	40.9 - 45.1	50.3 - 55.5	61.5 - 67.8
500	500.0 - 503.0	585	230	185	50	50	53	55	29.7 - 32.8	45.4 - 50.1	55.8 - 61.5	68.2 - 75.4

**NOTE:**

- ▶ The tolerance limit for the dimensions (Z, L, L1 & h) will be 5± mm.
- ▶ e = Thickness at the end.
- ▶ SDR 16 - 11 bar water/10 bar gas.
- ▶ This product "Stub Flange" is usually used with G.I. backing ring and an EPDM rubber gasket, the whole assembly is called flange adapter set.
- ▶ Refer to FM & WRAS certificates for more details.
- ▶ Other SDRs and sizes are also available upon request.



Stub Flange

# Moulded Fittings

## Miscellaneous Data:

### 1. Ordering Information

Example: SD-PEMSF-1-40

- SD-PEMSF is the part number
- (1) ISO 4427 (2) API 15LE
- (1) HDPE (2) MDPE
- (40) Size

### 2. Contact Information

For further information on any aspect of the SHIELD HDPE Moulded Fittings please contact below:

MIDDLE EAST & AFRICA	UNITED KINGDOM
Jebel Ali Free Zone, Dubai, UAE P.O Box: 61199 Tel.: +971 4 881 2070 Fax: +971 4 881 2198 Email: shieldme@shielglobal.com	Unit 3, Endeavor Drive, Basildon-Essex, SS3 14WF Tel.: +44 1708 377731 Fax: +44 1708347637 Email: shielduk@shielglobal.com