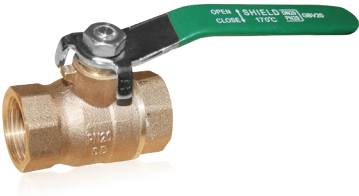


# Bronze Ball Valve

**Model: SD-GBV25/W**

The SD-GBV25/W Ball valve is manufactured to BS 5750 and ideal for potable water, commercial and industrial applications. These ball valves features a blow-out proof stem as well as a full port design which ensures minimal pressure drop.



## Product Specifications:

Working Pressure	PN20, PN25
Working Temperature	-20°C - 170°C
Thread	BS 21 (B.S.P.T)
Approvals/Listings	<b>WRAS</b> Water Regulations Advisory Scheme

# Bronze Ball Valve

## Product Dimensions:

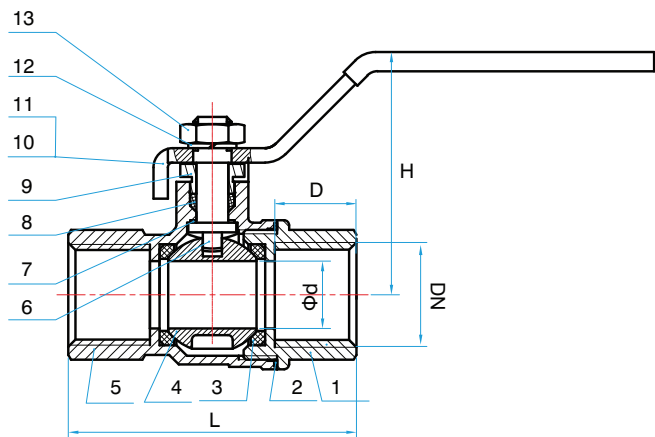
Bronze Ball Valve

DN	D	H	L	Ød
15	95	44	53	14
20	110	51	61	19
25	110	55	71	24
32	140	65	85	31
40	140	70	92	38
50	160	83	114	49

- NOTE:
- Dimensions are in mm
  - Extended Stem shall be supplied upon request.

## Drawing Specification

No.	Part	Material
1	Seat Retainer	Bronze
2	Gasket	PTFE
3	Seat	PTFE
4	Ball	Brass (Chromeplated)
5	Body	Bronze
6	Stem	Brass
7	Stem Gasket	PTFE
8	Packing	PTFE
9	Gland Nut	Brass
10	Lever	Steel
11	Lever Cover	PVC
12	Gasket	65Mn Steel
13	Lever Nut	Brass



# Bronze Ball Valve

## Miscellaneous Data:

### 1. Ordering Information

Example: SD-GBV25/W-20

- SD-GBV25/W is the part number
- (20) Size

### 2. Contact Information

For further information on any aspect of the SHIELD Valves products please contact below:

MIDDLE EAST & AFRICA	UNITED KINGDOM
Jebel Ali Free Zone, Dubai, UAE P.O Box: 61199 Tel.: +971 4 881 2070 Fax: +971 4 881 2198 Email: shieldme@shielglobal.com	Unit 3, Endeavor Drive, Basildon-Essex, SS3 14WF Tel.: +44 1708 377731 Fax: +44 1708347637 Email: shielduk@shielglobal.com