

BRONZE BUTTERFLY VALVES, GROOVED

MODEL: SDBB-G



TECHNICAL SPECIFICATION

| | |
|---------------------|-------------------|
| Size | 2" Through 2 1/2" |
| Working Pressure | 175 psi |
| Max. Test Pressure | 350 psi |
| Working Temperature | 250° F (120° C) |

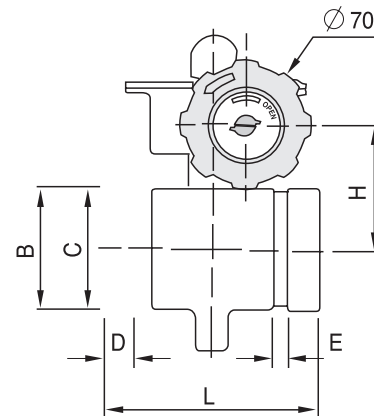
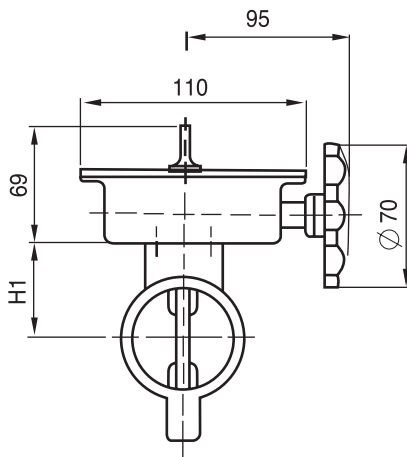
Factory Installed UL Approved Tamper Switch for indoor use only.

MATERIAL

| | |
|------|--|
| Body | Brass, Bronze |
| Disc | Brass, Ductile Iron, EPDM Encapsulated |
| Stem | Stainless Steel |



Dimension (SCH 40, C=120)



| Size | L | H | H1 | A | B | C | D | E | Weight Kg (lbs) |
|--------|-----|----|----|-----|------|------|------|-----|--------------------|
| 2" | 114 | 65 | 50 | --- | 60.3 | 57.1 | 15.8 | 7.9 | 2.2 |
| 2 1/2" | 114 | 65 | 50 | --- | 73.0 | 69.0 | 15.8 | 7.9 | 2.4 |

Unit : mm