

HIGH VELOCITY WATER SPRAY NOZZLE

MODEL: SD-HB Brass
SD-H Stainless Steel

TECHNICAL SPECIFICATION

Maximum Working Pressure	12 Bar (175 Psi)	
Effective Working Pressure	2.1 Bar to 6 Bar (30 - 80 PSI)	
End Connection	1" BSPT (1" NPT Optional)	
Material	SD-HB Housing & Scroll Brass ASTM-B21 Strainer - Copper	
	SD-H SS316 (CF8M) Stainless Steel Housing Strainer - Stain- less Steel	
Included Water Spray Angle and K-Factor	Spray Angle	K-Factor Metric (US)
	75°	61 (4.4)
	90°	78 (5.6)
	100°	48 (3.4)
	100°	58 (4.2)
Weight (Approx)	SD-HB 0.25 Kg SD-H 0.22 Kg	
Finish	Brass Finish, Nickel Chrome Plated (optional for SD-HB) Natural (For SD-H)	
Ordering Information	Specify Model, K-Factor, Spray Angle, Finish and Connection	

DESCRIPTION

High Velocity Water Spray Nozzles are internal swirl plate type open nozzles designed for use in fixed water spray or deluge system for the fire protection application.

These nozzles produce solid uniform and dense core of high velocity water spray to affect fire control. Nozzles are normally used to cool the surface as well as for extinguishment. Nozzles are typically used for Deluge protection of special hazards such as oil filled transformers, switch-gear, chemical process equipment, conveyor system, diesel engines, flammable liquid storage areas and similar hazards. The minimum



desirable pressure to achieve a reasonable spray pattern is 2.1 Kg./sq.cm. (30 psi). The water distribution pattern is as shown in the graph in following pages giving maximum effective axial distance from the nozzle. The spray pattern shown is with indoor application. The system designer must consider wind velocity while designing the system for outdoor application. The spray pattern is drawn considering maximum of 20 Km/hr. Field obstruction if any affecting the spray pattern of the nozzle must be considered. The nozzle may be oriented in any position as deemed necessary to cover the hazard.

2.1 bar to 6 bar pressure at Nozzle is recommended for effective application requiring High Velocity Water delivery for rapid extinguishment of all fires by emulsification.

The Nozzles are having inbuilt Strainer, but still main pipeline strainer is required in the system.

The Blow-off cap can be used to prevent the depositing of foreign material in the water way of the nozzle. Use of Blow-off cap is optional and not UL listed.

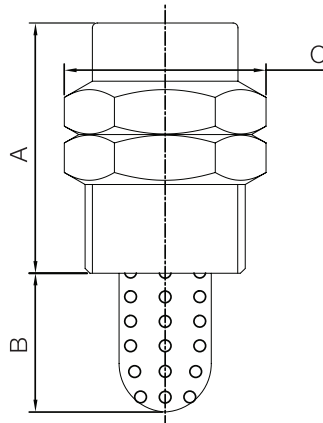
MAINTENANCE

The spray nozzle must be handled with due care. For best results, the storage as well as any further shipment be made in original packing only.

Nozzle which is visibly damaged should not be installed. Use Teflon tape or soft thread sealant on the male thread of the nozzle.

It is recommended that the water spray system be inspected by authorised technical personnel. The nozzle must be checked for corrosion, external and internal obstruction, blockage if any. The nozzle should be cleaned or replaced if required. The system must be operated with optimum water flow at least three times in a year or as per the provision of NFPA/TAC or local authority having jurisdiction.

The owner is solely responsible for maintaining the water spray system and components therein, so that it performs properly when required.



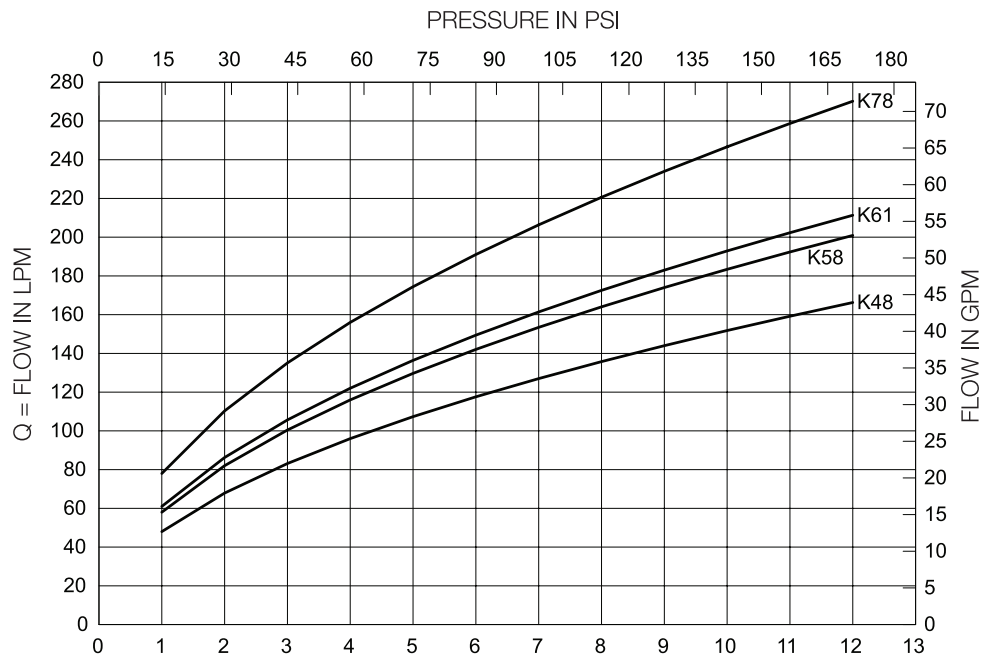
MATERIAL

PART	SD-HB	SD-H
Body	Brass	Stainless Steel
Swirl Plate	Brass	SS 316
Strainer	Copper	SS 316

NOZZLE FACTOR & SPRAY ANGLE	A	B	C A/F
K 48 x 100°	52	29	36
K 58 x 100°	52	29	36
K 61 x 75°	52	29	36
K 78 x 90°	52	29	36

DIMENSION In millimeters (Approximate)

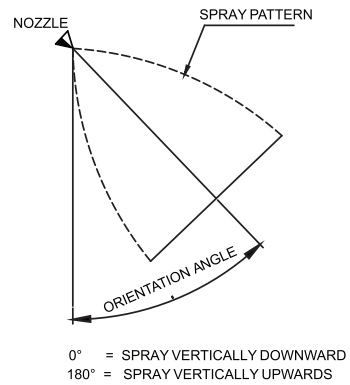
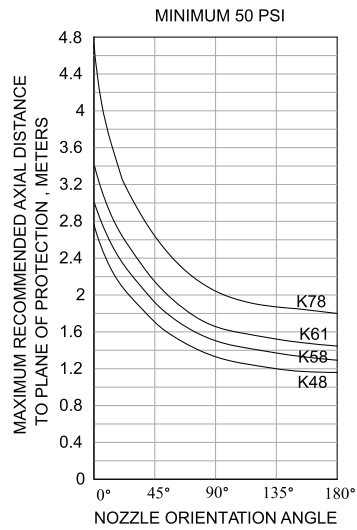
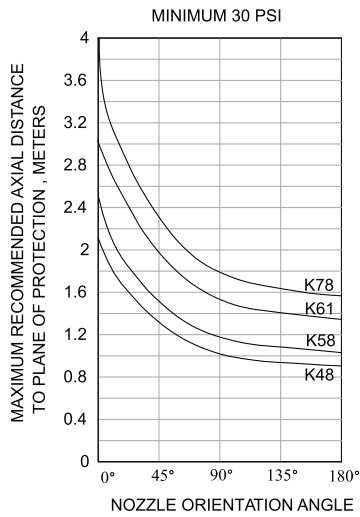
DISCHARGE CHARACTERISTICS



P - PRESSURE IN Kg./Sq.Cm.

$Q = K \sqrt{P}$ where P is supply pressure in Kg/sq.cm., K = nozzle constant (K-factor) in metric
US K factor = Metric K factor ÷ 14.2745

MAXIMUM RECOMMENDED AXIAL DISTANCE VS NOZZLE ORIENTATION



SPRAY PATTERN

