

TEST AND DRAIN VALVE

MODEL: SD-TDV50T-E, SD-TDV50G-E



DESCRIPTION

Test and Drain valve for sprinkler systems combines the functions of test and drain for wet sprinkler systems.

This valves have forged brass body with chrome plate brass ball valve and PTFE seats. The valves complies with the requirements of NFPA-13, NFPA- 13R and NFPA-13D. This valves are single handle ball valves with three working positions. They include tamper resistant test orifice and sight glass for the visual control.

PRODUCT SPECIFICATIONS

Test and drain valve for sprinkler systems combines the functions of test and drain for wet sprinkler systems. complies with the requirements of NFPA-13, NFPA-13R and NFPA-13D.

Main feature as following:

- Positive positioning of handle for OFF, TEST, or DRAIN
- Threaded and Grooved End Connection
- Large, integral sight glass on both sides.
- ½" nominal test orifice

VERSIONS AND PRODUCT CODES

Series	Size	Type
SD-TDV50T-E	1"	NPT (F) x NPT (F)
	1¼"	
	1½"	
	2"	
SD-TDV50G-E	1"	Groove x Groove
	2"	

INSTALLATION

Installation practices consistent with those of the re sprinkler industry are appropriate for the installation of this product. can be installed either vertically or horizontally. Always make sure to property hold back the valve and each component being installed to the valve to prevent over tightening or stressing of the valve body. It is also necessary to make sure all components are in proper alignment in the assembly where the valve is present. Improper alignment of attached components may create stress on the valve leading to valve failure. Use a suitable thread sealant such as PTFE tape or PipeFit thread sealant paste with PTFE. Never use paste and tape together. we do not recommend the use of anaerobic sealant with this product.



SD-TDV50T-E (Threaded)

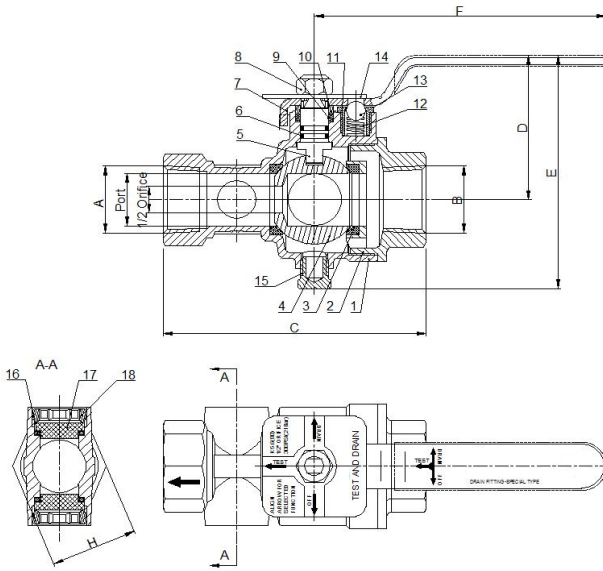


SD-TDV50G-E (Grooved)

TECHNICAL DATA

- Rated pressure: 300 psi

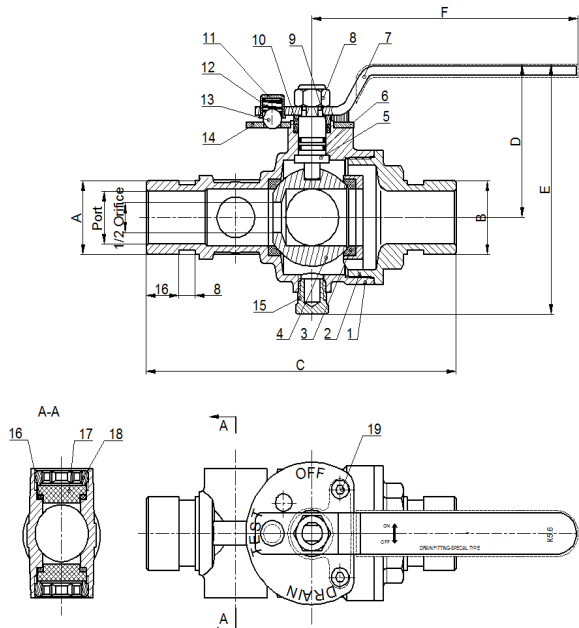
FEMALE NPT x FEMALE NPT



NO.	PART NAME	MATERIAL
1	BODY	BRASS C37700
2	CAP	BRASS C37700
3	SEAL	PTFE
4	BALL	BRASS C37700
5	STEM	BRASS C37700
6	O-RING	NBR
7	LEVER	STAINLESS STEEL 304
8	NUT	STAINLESS STEEL 304
9	GLAND PACKING	PTFE
10	GLAND RING	BRASS C37700
11	GLAND NUT	BRASS C37700
12	SPRING	STAINLESS STEEL 304
13	STEEL BALL	STAINLESS STEEL 304
14	INDICATOR PLATE	STAINLESS STEEL 304
15	PLUG	BRASS C37700
16	WASHER	NBR
17	SIGHT GLASS	LEXAN
18	RETAINING RING	BRASS C37700

SIZE	Orifice	Port	C	D	E	F	H
1"	½"	1.024"	5"	2.81"	4.56"	5.55"	1.65"
1¼"	½"	1.024"	5"	2.81"	4.56"	5.55"	1.65"
1½"	½"	1.575"	6.5"	3.5"	5.8"	6.34"	2.28"
2"	½"	1.575"	6.5"	3.5"	5.8"	6.34"	2.28"

GROOVE x GROOVE



NO.	PART NAME	MATERIAL
1	BODY	BRASS C37700
2	CAP	BRASS C37700
3	SEAL	PTFE
4	BALL	BRASS C37700
5	STEM	BRASS C37700
6	O-RING	NBR
7	LEVER	STAINLESS STEEL 304
8	NUT	STAINLESS STEEL 304
9	GLAND PACKING	PTFE
10	GLAND RING	BRASS C37700
11	GLAND NUT	BRASS C37700
12	SPRING	STAINLESS STEEL 304
13	STEEL BALL	STAINLESS STEEL 304
14	INDICATOR PLATE	STAINLESS STEEL 304
15	PLUG	BRASS C37700
16	WASHER	NBR
17	SIGHT GLASS	LEXAN
18	RETAINING RING	BRASS C37700
19	SCREW	STAINLESS STEEL

SIZE	Orifice	Port	C	D	E	F
1"	½"	1.024"	5"	2.81"	4.56"	5.55"
2"	½"	1.575"	6.57"	3.5"	5.8"	6.34"