

TANK COOLING NOZZLE

Model No. : SD-TCB & SD-TCS



TECHNICAL DATA :

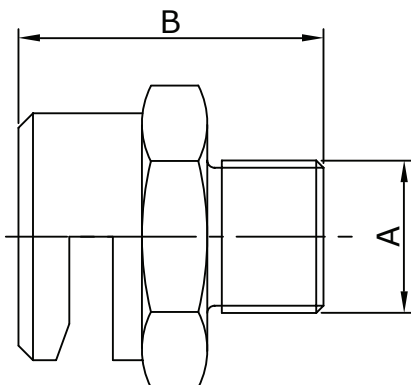
MATERIAL	Brass ASTM B16, Stainless Steel
MAXIMUM WORKING PRESSURE	12 Bar (175 PSI)
EFFECTIVE WORKING PRESSURE	1.4 to 3.5 Bar (20 - 50 PSI)
END CONNECTION	½" NPT (BSPT optional)
Temperature	+5° C to +65° C
K-FACTOR	K1.4, K2.1, K2.6, K2.9, K4.05, K5.5
WEIGHT (Approx)	0.180 Kg
FINISH	Chrome plated or Brass finish for SD-TCB Natural finish for SD-TCS
ORDERING INFORMATION	Specify Model, K factor and Finish

DESCRIPTION

The Tank Cooling Nozzle distributes water in a flat curtain.

Tank Cooling Nozzle is typically mounted in upright position at a distance from the exterior wall of the tank for cooling of the tank. In case of fire in the vicinity of the tank it prevents the tank from absorbing the heat radiation.

Tank Cooling Nozzles are available in Brass and Stainless Steel construction with different k-factors. The main pipeline strainers as per NFPA -15 are required for system utilizing nozzles with orifice diameter less than 9.5 mm (3/8 inch).



MAINTENANCE

The spray nozzle must be handled with due care. For best results, the storage as well as any further shipment be made in original packing only.

Nozzle which is visibly damaged should not be installed.

Use Teflon tape or soft thread sealant on male thread of the nozzle. Excessive tightening torque may result into serious damage to nozzle arms and the deflector which may affect spray pattern of the nozzle and its performance.

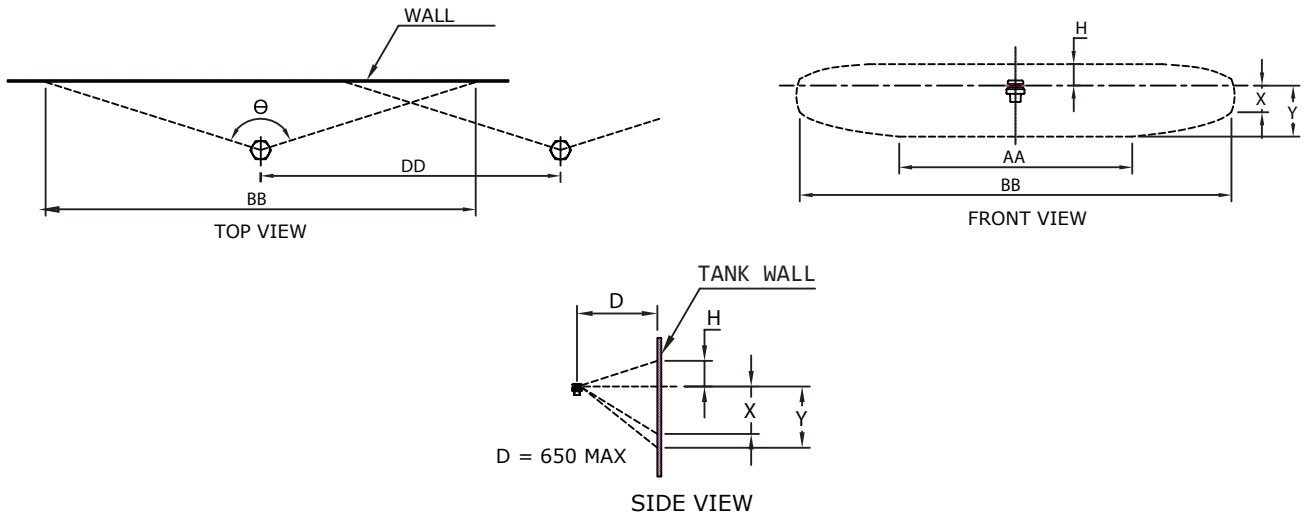
It is recommended that water spray system be inspected regularly by authorized technical personnel.

The nozzle must be checked for atmospheric effects, external and internal obstruction, blockage if any. The nozzles should be cleaned or replaced if required. The system must be operated with optimum water flow at least twice in a year or as per the provisions of NFPA/ TAC or local authority having jurisdiction.

The owner is solely responsible for maintaining the water spray system and the components therein so that it performs properly when required.

MODEL	A	B In MM
SD-TCB & TCS	1/2" BSPT	44

SPRAY PATTERN



K FACTOR	DIMENSIONS (IN MM)						ANGLE (IN DEGREE)
	AA	BB	H	X	Y	DD	
K20 (1.4)	4.3 X D	7.3 X D	0.25 X D	0.3 X D	0.7 X D	5.0 X D	150
K30 (2.1)	4.5 X D	7.6 X D	0.25 X D	0.3 X D	0.7 X D	5.0 X D	150
K37 (2.6)	4.5 X D	7.6 X D	0.25 X D	0.4 X D	0.85 X D	5.0 X D	150
K42 (2.9)	4.65 X D	9.1 X D	0.25 X D	0.4 X D	0.85 X D	6.0 X D	155
K58 (4.05)	5.15 X D	9.4 X D	0.35 X D	0.4 X D	0.85 X D	6.0 X D	155
K79 (5.5)	5.55 X D	11.3 X D	0.35 X D	0.4 X D	0.85 X D	6.0 X D	160